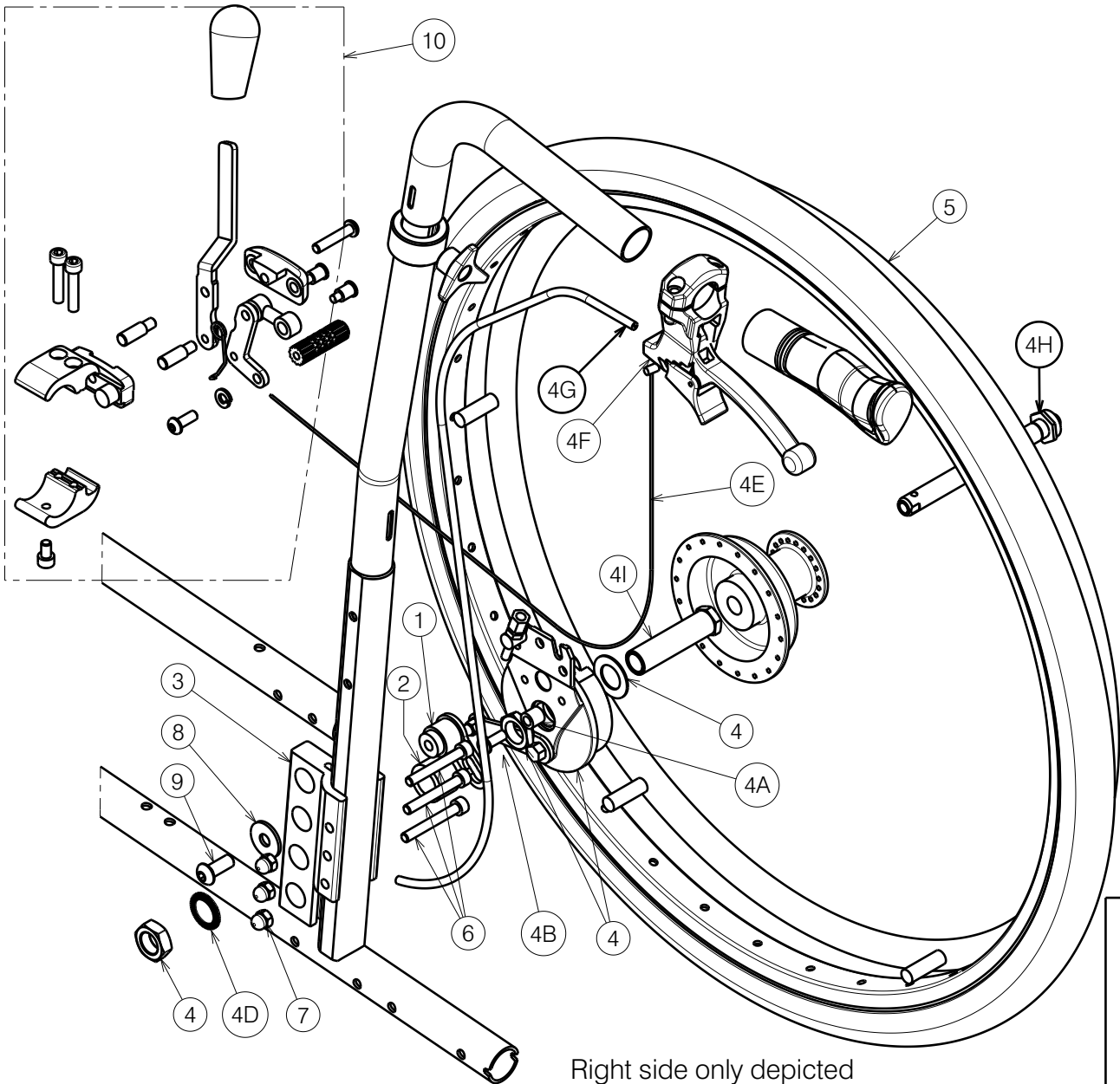


Material			
No.	Plan	Article	Quantity
1	Y016096	1737800	2
2	X003986	1902199	2
3	X004492	1738632	2
4	---	1906523 (L)	1
	---	1906524 (R)	1
4A	X005545	2019900	2
4B	M6x16 ISO7380	1008459	2
4C*	---	1004109	2
4D	M16 type S DIN17222	1911653	2
4E	---	1004094	2
4F	∅25.4	1992969	2
4G	---	1993218	(2x) 0.75 m
4H	X005720	1905243	2
4I	X005544	1912111	2
5	---	1905239 (PU)	2
	---	1908445 (Air)	2
6	M6x45 DIN912	1003109	6
7	M6	1008492	6
8	M8 DIN9021	1996574	2
9	M8x20 ISO7380	1992349	2
10	E000915	1910165 (L)	1
	E000915	1910166 (R)	1

\* Not depicted



Right side only depicted

2991538

E000803 / H

B74/B80 V200D				Plan No.
				E000803 / H
Scale: 1:4	Drafted	Verified	Confirmed	
Date	17/01/2012	18/01/2023	18/01/2023	
Initials	SD	SD	PJ	